

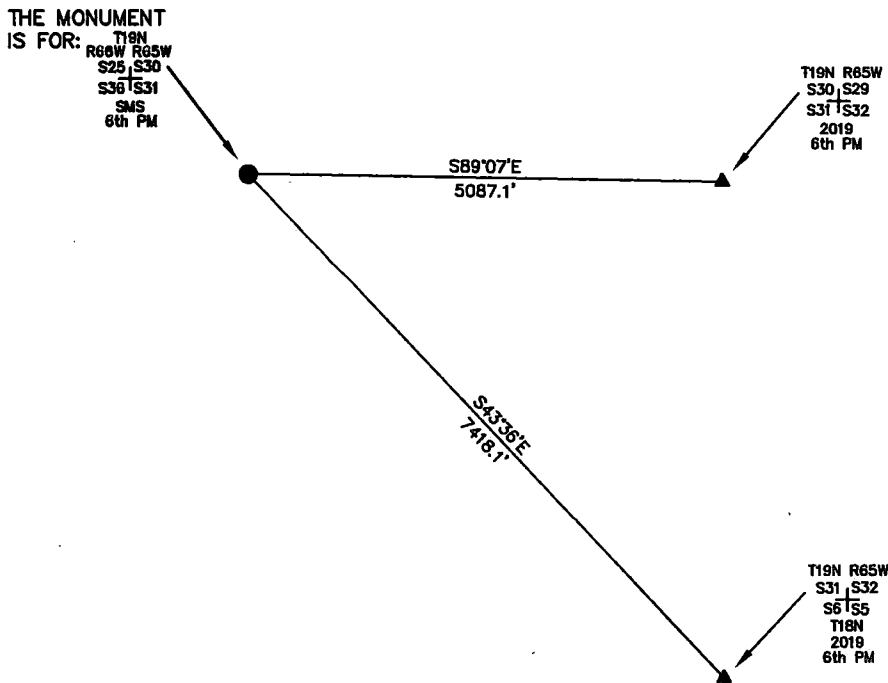
State of Wyoming Corner Record

CORNER PERPETUATION AND FILING ACT,

Regulations of the Board of Registration for Professional Engineers and Land Surveyors.)

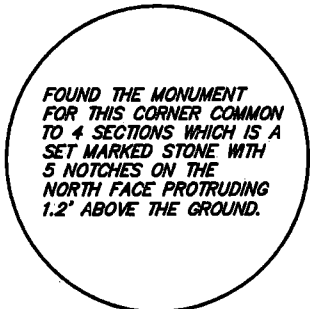
Reverse side of this form may be used if more space is needed.

Record of original survey and citation of source of historic information (if corner is lost or obliterated). Description of corner monumentation evidence found and/or monument and accessories established to perpetuate the location of this corner. Sketch of relative location of monument, accessories, and reference points with course and distance to adjacent corner(s) (if determined in this survey). Method and rationale for reestablishment of lost or obliterated corner.



NOTE:
LINES SHOWN ARE BETWEEN
MONUMENTS AND MAY OR
MAY NOT BE SECTION OR
SECTION SUBDIVISION LINES.

FOUND THE MONUMENT FOR THIS CORNER COMMON TO 4
SECTIONS WHICH IS A SET MARKED STONE WITH 5 NOTCHES
ON THE NORTH FACE PROTRUDING 1.2' ABOVE THE GROUND.



CORNER MONUMENT SYMBOLS

- RECORD IS FOR THIS CORNER MONUMENT.
- ▲ A RELATED CORNER OR WC MONUMENT.



SCALE 1"=2000'
(EXCEPT IN
TRIVIAL CASES)
BEARINGS ARE RELATED
TO WGS 84 WITH
GPS OBSERVATIONS
DRAWN BY: K.H.
P.C. C. MEERS
COUNTY: LARAMIE

Marking on the Stone

Date of Field Work: 03/11/19 Office Reference: _____

CROSS INDEX DIAGRAM

1	2	3	4	5	6	7	8	9	10	11	12	13	14	15	16	17	18	19	20	21	22	23	24	25		
A																									A	
B																									B	
C		6		5		4		3		2		1													C	
D																										D
E																										E
F																										F
G		7		8		9		10		11		12														G
H																										H
J																										J
K																										K
L		18		17		16		15		14		13														L
M																										M
N																										N
O																										O
P		19		20		21		22		23		24														P
Q																										Q
R																										R
S																										S
T		30		29		28		27		26		25														T
U																										U
V																										V
W																										W
X		31		32		33		34		35		36														X
Y																										Y
Z																										Z
1	2	3	4	5	6	7	8	9	10	11	12	13	14	15	16	17	18	19	20	21	22	23	24	25		

Firm/Agency, Address

UELS, LLC

3313 35TH Avenue

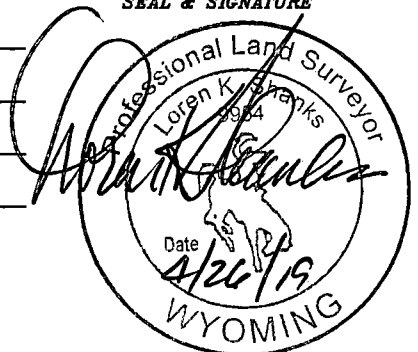
Suite B

Evans, Co 80620

Telephone Number: 970-506-1544

This corner record was prepared
by me or under my direction
and supervision.

SEAL & SIGNATURE



RECP #: 754824

RECORDED 6/10/2019 AT 9:57 AM BK# 2624 PG# 1188

Debra K. Lee, CLERK OF LARAMIE COUNTY, WY PAGE 1 OF 1

CORNER COMMON TO 4 SECTIONS
NORTHWEST CORNER OF SECTION 31 Section: 31 T 19 N R 65 W ; 6TH P.M. Cross Index No.: V-1
SBRPEPLS/PLSW: March 1994 (CLCR...SJA)